

TONY BERLANT



ZOLLA/LIEBERMAN GALLERY INC.

325 West Huron, Chicago, Illinois 60610 ph 312 944 1990 fx 312 944 8967
 www.zollaliebermangallery.com zollalieberman@sbcglobal.net



Out of L.A., 2005, Found and fabricated printed tin collaged on plywood with steel brads, 34" x 66"

Margaret Hawkins
 October 2006

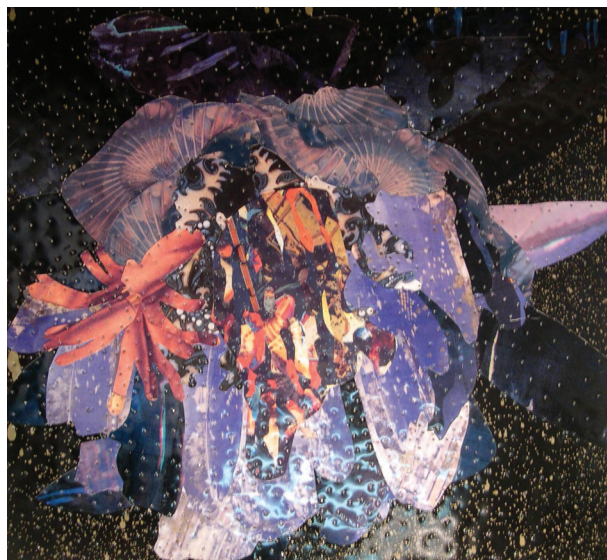
Tony Berlant's fractured, punctured metal surfaces are constructed distractions from the smooth beauty to which they refer that otherwise might be too much or too seductive to see all at once. Based on nature, if oddly so, his printed tin collages on wood suggest bouquets or even topographical maps that have been flattened out and pounded into place with a hammer. It is an apt metaphor for the art-making process, this forceful wringing of beauty from cobbled-together readymade materials, this forging of art from junk through sheer force of will.

Berlant's reconstitution of found materials resurrects them. He grants them a second life through the grace of hard work. While some artists use nature and make it into art, Berlant reverses this process by taking the would-be art of industry, and using it to revisit the beauties of nature. And not just any nature, but the remote purity of the desert.

In "Echo" Berlant's spiky edged tree resembles a cactus and his crystal clear sky recalls the eerily intense colors of the southwest while patterned clouds and layered tree bark mirror his process of layering of unlike things.

This forging together of opposites is perhaps best seen in such works as "Out of L.A," a panoramic landscape suggesting big skies, heat and pulsating life. It is an homage to a city where nature collides beautifully with trash, a collision that occurs in Berlant's collages as well.

Galaxy, 2005, Found and fabricated printed tin collaged on plywood with steel brads, 22" x 24"





ABOVE: *Joshua Trees*, 2001, Found and fabricated printed tin collaged on plywood with steel brads, 34" x 66"
ON FRONT COVER: *Echo*, 2005, Found and fabricated printed tin collaged on plywood with steel brads, 36" x 34"

Tony Berlant

Hiding in Plain Sight

February 16 – March 31, 2007

Opening Reception: Friday, February 16, 5–7:30 pm

ZOLLA/LIEBERMAN GALLERY INC.

325 West Huron, Chicago, Illinois 60610 ph 312 944 1990 fx 312 944 8967
www.zollaliebermangallery.com zollalieberman@sbcglobal.net



Savannah, 2003, Found and fabricated printed tin collaged on plywood with steel brads, 48" x 60"